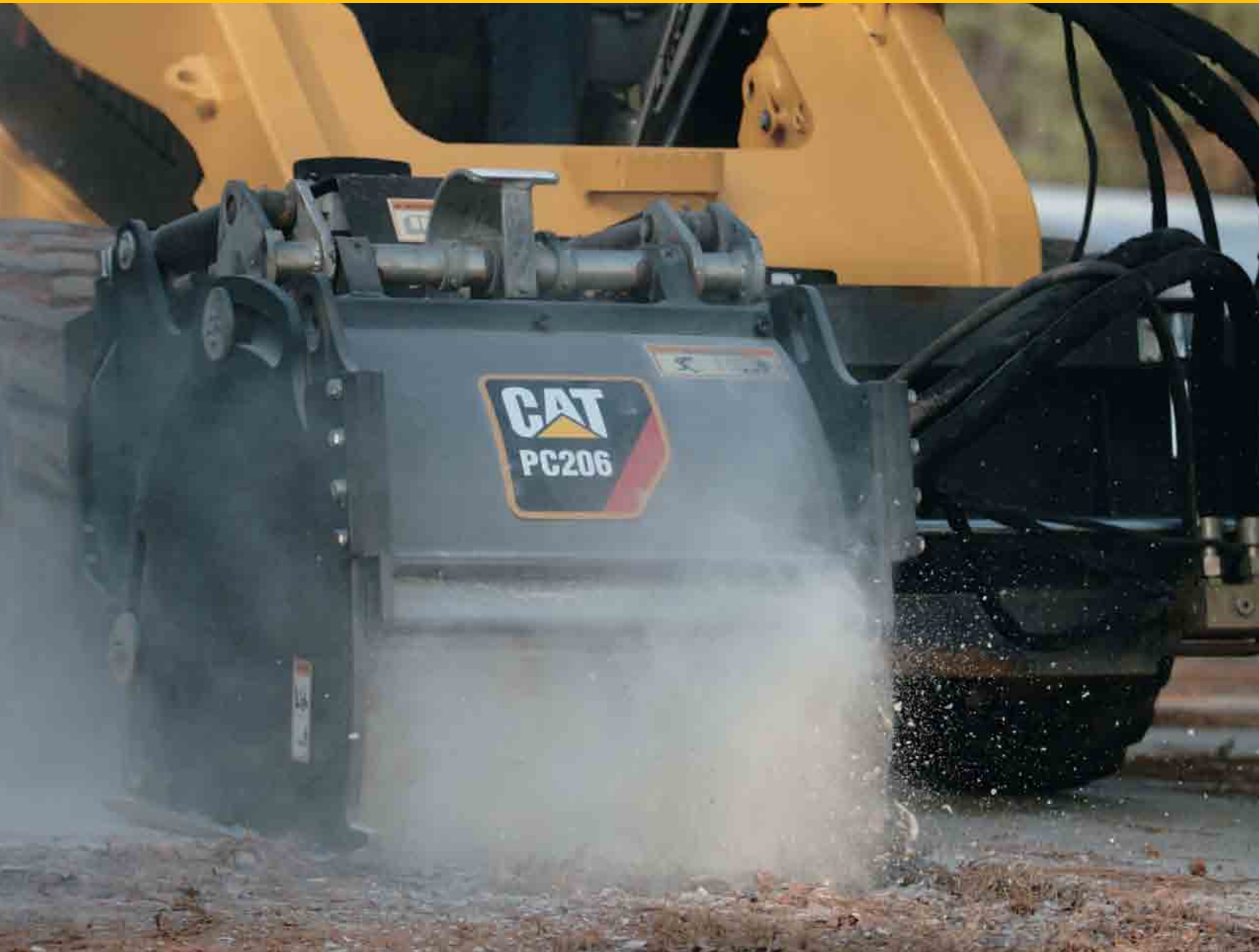


# PC203, PC204, PC205, PC206, PC210

Cold Planers for Skid Steer and Multi Terrain Loaders



*Hydraulically driven rotating drum with teeth remove a layer of asphalt or concrete prior to resurfacing, used by road repair contractors in restricted areas that cannot be accessed by larger machines and for small municipal road repair works.*

## Features

- Self-levelling
- Spring and hydraulic tilt
- Independent depth control
- Hydraulic side-shift
- Rotating conical cutting tip

## Benefits

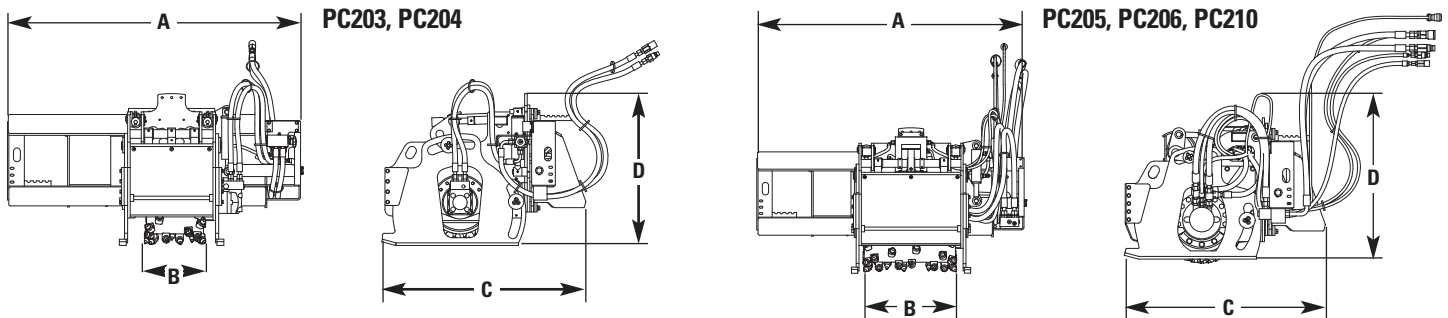
- Ensures a constant planing depth when used at any coupler angle incline.
- Enables the unit to oscillate  $\pm 8$  degrees in either direction.
- Maximum depths ranging from between 130-200mm can be easily adjusted independently, to allow for multiple pass planning.
- Allows close planing to walls and other jobsite obstructions.
- Inter changeable to ensure even wear, for longer life.

# PC203, PC204, PC205, PC206, PC210 Cold Planers

## Specifications and Dimensions

|                                                                                                     |       | PC203   | PC204   | PC205     | PC206     | PC210     |
|-----------------------------------------------------------------------------------------------------|-------|---------|---------|-----------|-----------|-----------|
| <b>A</b> Overall Width                                                                              | mm    | 1720    | 1720    | 1720      | 1720      | 1720      |
| <b>B</b> Maximum Drum width                                                                         | mm    | 350     | 450     | 450       | 600       | 1000      |
| <b>C</b> Length                                                                                     | mm    | 1180    | 1180    | 1180      | 1265      | 1130      |
| <b>D</b> Width                                                                                      | mm    | 840     | 840     | 990       | 930       | 890       |
| Weight                                                                                              | kg    | 650     | 690     | 750       | 906       | 1080      |
| Drive Method                                                                                        |       | Direct  | Direct  | Planetary | Planetary | Planetary |
| Required Hydraulic Flow Range                                                                       | L/min | 55-100  | 55-100  | 80-125    | 95-140    | 95-180    |
| Optimal Hydraulic Pressure Range                                                                    | bar   | 160-240 | 160-240 | 160-300   | 160-300   | 160-300   |
| Drum Torque at Max Pressure                                                                         | Nm    | 1250    | 1250    | 2670      | 3720      | 5340      |
| Drum Speed at Max Flow                                                                              | rpm   | 202     | 202     | 220       | 160       | 173       |
| Bit Speed at Max Flow                                                                               | mpm   | 301     | 301     | 336       | 266       | 368       |
| Conical Bits (per drum width)                                                                       |       | 42      | 42      | 48        | 60        | 78        |
| Standard Bit Type: All Purpose                                                                      |       |         |         |           |           |           |
| Optional Bit Type: Concrete                                                                         |       |         |         |           |           |           |
| Tilt angle range                                                                                    |       | ±8°     | ±8°     | ±8°       | ±8°       | ±8°       |
| Sideshift Travel                                                                                    | mm    | 650     | 650     | 650       | 650       | 465       |
| Maximum Depth of Cut (standard drum)                                                                | mm    | 150     | 150     | 150       | 170       | 130       |
| Optional Drum Widths/Depths                                                                         |       |         |         |           |           |           |
| PC203: 80/200, 152/200, 203/200, 305/200 mm                                                         |       |         |         |           |           |           |
| PC204: 80/200, 152/200, 203/200, 305/200, 350/200, 400/150, 450/150, *450/150 mm                    |       |         |         |           |           |           |
| PC205: 80/200, 152/200, 203/200, 305/200, 350/200, 400/200, 450/150, *450/150 mm                    |       |         |         |           |           |           |
| PC206: 80/200, 152/200, 203/200, 305/200, 350/200, 400/150, 450/150, *450/150, 600/170, *600/170 mm |       |         |         |           |           |           |

\* Concrete



## Hydraulic Requirements

PC203/PC204 – Standard flow hydraulics and no electrics. PC205/PC206/PC210 – High flow hydraulics, full electrics.

## Matching Guide

| Cold Planers | Skid Steer Loaders                                         | Multi Terrain Loaders        |
|--------------|------------------------------------------------------------|------------------------------|
| PC203        | 216B, 226B, 232B, 242B, 242B, 236B, 246C, 256C, 262C, 272C | 247B, 257B, 277C, 287C, 297C |
| PC204        | 226B, 232B, 242B                                           | 247B, 257B                   |
| PC205        | 226B HF, 242B HF, 246C, 256C, 262C, 272C                   | 257B HF, 277C, 287C, 297C    |
| PC206        | 226B HF, 242B HF, 246C, 256C, 262C, 272C                   | 257B HF, 277C, 287C, 297C    |
| PC210        | 256C, 262C, 272C                                           | 277C, 287C, 297C             |

For more complete information on Cat products, dealer services, and industry solutions, visit us on the web at [www.cat.com](http://www.cat.com)

HEHX3173-2 (03/2007) hr

© 2007 Caterpillar -- All Rights Reserved

Materials and specifications are subject to change without notice. Featured machines in photos may include additional equipment. See your Caterpillar dealer for available options.

CAT, CATERPILLAR, their respective logos, "Caterpillar Yellow" and the POWER EDGE™ trade dress, as well as corporate and product identity used herein, are trademarks of Caterpillar and may not be used without permission.

**CATERPILLAR**<sup>®</sup>  
TODAY'S WORK. TOMORROW'S WORLD.™